

CERTIFICATE OF LOCATION OF GOVERNMENT CORNER

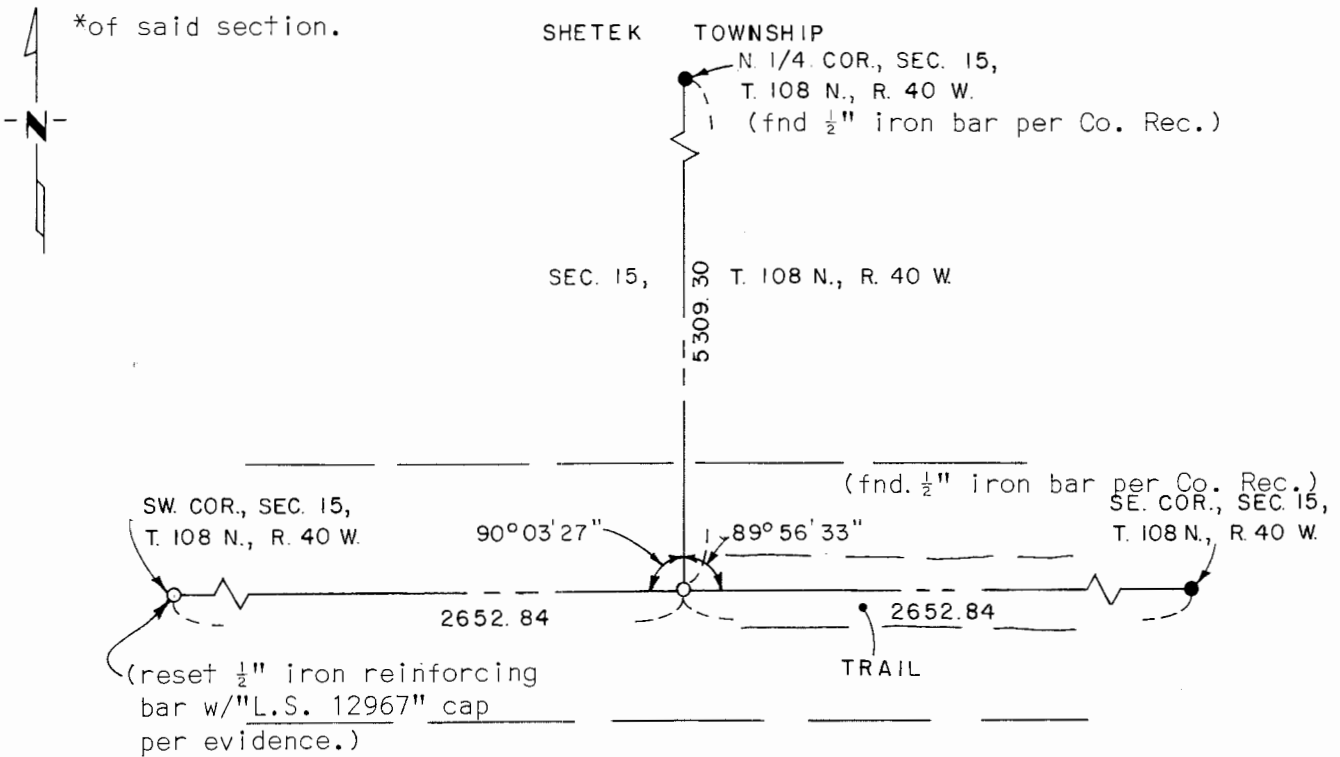
_____ South Quarter _____ Corner of Section 15 _____, Township 108 N., Range 40 W., 5 th P.M.

STATE OF MINNESOTA, County of Murray

At the corner location shown on the sketch:

- On _____ found a _____
DATE
- left monument as found, lowered monument, removed monument (explain)
- On 9-5-80 placed a 1/2" iron reinforcing bar with "L.S. 12967" cap on line
DATE
between and equidistant from the found southeast and reset southwest corners*

SKETCH OF REFERENCE TIES



I hereby certify that this document and the data contained herein was prepared by me or under my direct supervision.

Ray S. Naf SIGNATURE 12/25/81 DATE

Registration No. 12967

- Land Surveyor, Professional Engineer
- County Surveyor, County Engineer

OFFICE OF THE COUNTY RECORDER

County of Murray

I hereby certify that this document was filed in the Co. Recorders office at 10 A.M. on the 18th day of February A.D. 1982

County Recorder *Willard W. Ohme*

By _____, Deputy

DOCUMENT NO. _____